

Key-In-Knob, Key-In-Lever, & Key-In-Deadbolt Cylinders

Ilco KIK, KIL and KID Cylinders are machined from solid brass bar stock, engineered and manufactured to OEM specifications. Master Key and Grand Master Key quality, and are re-keyable to original manufacturers systems. The broad selection of models and components within our line provides you with the flexibility to cover numerous applications. All KIK, KIL, and KID cylinders are available factory master keyed/construction master keyed.

1599 Knob, Lever and Deadbolt Cylinder

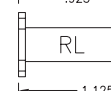
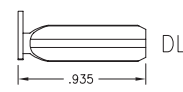
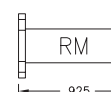
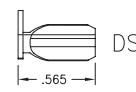
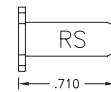
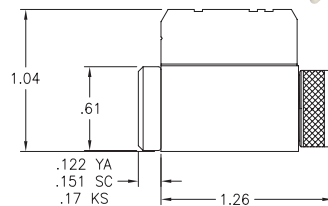
Universal Knob/Lever Locksets—Including Schlage, Plus Arrow® and Schlage® Deadbolts

- 2 finishes - 04, 26D
- 31 Keyways
- 6 Tailpieces included (3 rigid in different lengths, 1 lazy for single deadbolt, 2 lazy in different lengths for double deadbolt)

15985 — 5 pin

15995 — 5 pin, drilled 6

15996 — 6 pin



1539 Knob and Lever Cylinder

- 2 finishes - 04, 26D
- 31 Keyways
- 3 Rigid Tailpieces included, 2 additional tailpieces (BA & BB) for Sargent® Keyways

15395 — 5 pin, drilled 6

1539 — 6 pin

1539 — Dummy Cylinder

