

# 8000 SERIES

**ANSI GRADE 1**

**ANSI GRADE 1**

**ANSI/BHMA A156.4**

Series 2000, PT1

Exceeds 1,500,000 cycles with Backcheck



UL10C Positive Pressure Rated. Conforms to UBC 7-2 (1997). (Uniform Building Code Standard)



Comply with ANSI A117.1

**25-Year Warranty**



**Model**

**8000**

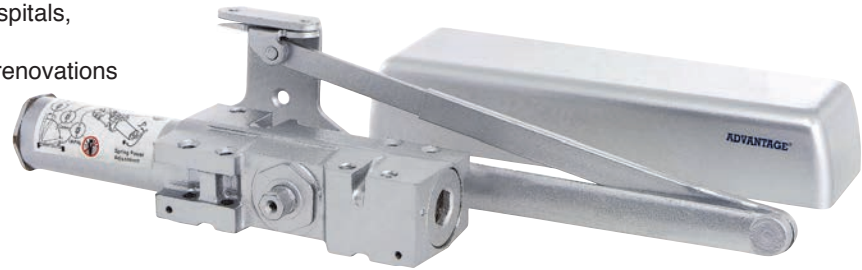
Adjustable power size 1-6 with Back Check

**8000/DA**

Adjustable power size 1-6 with Back Check and Delay Action

**Applications**

- Extra Heavy Duty Commercial model ideal for high traffic door
- Versatile for new constructions, such as schools, hospitals, and public institutions
- Same mounting hole pattern as LCN4041, ideal for renovations
- Tri-packed for all type applications
- Sex-bolts included for Metal Door mounting



**Features**

- Multi-size spring adjustable power size 1-6
- Factory preset size 3
- Meet ADA

Product Specification	
Material	Heavy Duty Cast Iron body, forged steel arm Heat treated forged steel piston Double Heat treated Steel pinion
Cover	Full plastic cover – standard
Valves	Triple valve control for Closing speed, Latching speed, and Back-check cushion Delayed Action valve – Optional (Model: 8000/DA) Staked valve for power adjustment
Arm & Brackets	Standard arm and parallel bracket included for different mounting demand
Screws	Self-tapping wood screws, machine screws, and sex-bolts
Finishes	Aluminum, Duronotic, Gold, and US26D-Satin Chrome

**Optional Functions**

Wide choice of options for different applications

- Hold Open Arm (8001)
- Parallel Rigid Cush Arm (8002)
- Parallel Rigid Cush and Stop Arm (8003)
- Extended Forearm (8004)
- Parallel Rigid Arm (8005)
- Slide Track Arm (8006)
- Drop Plate (see Accessories)

**\* Special Order from the factory**

- Metal Cover
- Finish (BHMA): US3 (632), US4 (633), US26 (651), US26D (652), US32D (630)

**Technical Dimensions**

Series 8000	Size	
A. Length of Closer Body	11"	
B. Horizontal Mounting Holes	5"	
C. Vertical Mounting Holes	1"	
D. Height of Closer Body	2-3/4"	
E. Projection from Door	2"	



**8001 Hold-open Arm**  
Stand for pull side & top jamb  
Use with PA bracket for parallel arm mount



**8002 Parallel Rigid Cush Arm**  
Auxiliary Stop in soffit shoe



**8003 Parallel Rigid Hold Open Cush Arm**  
Hand control plunger hold open  
Auxiliary stop in soffit shoe



**8005 Parallel Rigid Arm**  
Featured with solid steel main & forearm for extra heavy traffic use

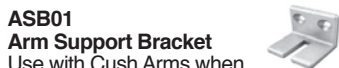
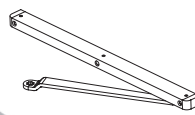


**8004 Extended Forearm**  
For Top Jamb with reveal between 2-5/8" to 4-13/16"



**8003SC Parallel Rigid Hold Open Spring Cush Arm**  
Hand control plunger hold open. Spring stop in soffit shoe

**8006 Slide Track Arm**  
Featured with adjustable Hold Open Angle



**ASB01 Arm Support Bracket**  
Use with Cush Arms when reveal is less than 3-1/16" (78 mm). The bracket provides anchorage for fifth screw loading



**PAB01 Parallel Bracket**  
For Hold Open Arm mounting can also use for regular parallel arm application



**BSS01 Blade Stop Spacer**  
Design to lower parallel arm shoe to clear 1/2" (13 mm) blade stop



**80C Standard Full Plastic Cover**



**1348 Sex-bolt with screw**

**Accessories**

**80DP-ST**  
Size: 12-1/4 x 3-9/16"



**Drop Plate – Pull Side**  
Hinge side mount when top rail is less than 3-3/4"  
Plate require 2" minimum top rail

**80DP-TJ**  
Size: 12-1/4 x 3-9/16"



**Drop Plate – Top Jamb**  
Use when frame face is less than 3 1/2"  
Use 8004 forearm if top reveal exceeds 2-9/16"

**80DP-TG**  
Size: 12-1/4 x 3-9/16"



**Drop Plate – Top Jamb with flush ceiling**  
Top of head frame face in flush ceiling condition  
Plate requires 1-3/4" minimum frame face  
Use 8004 forearm if top reveal exceeds 2-9/16"

**80DP-PA**  
Size: 12-1/4 x 5"



**Drop Plate – Parallel Arm**  
Use when top rail is less than 5-1/2", measured from the stop  
Plate requires at least 2-1/2" top rail